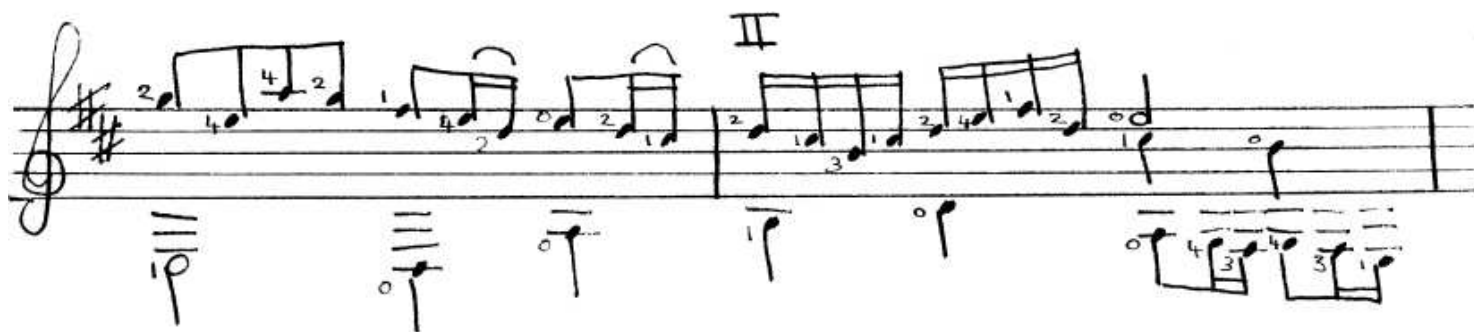
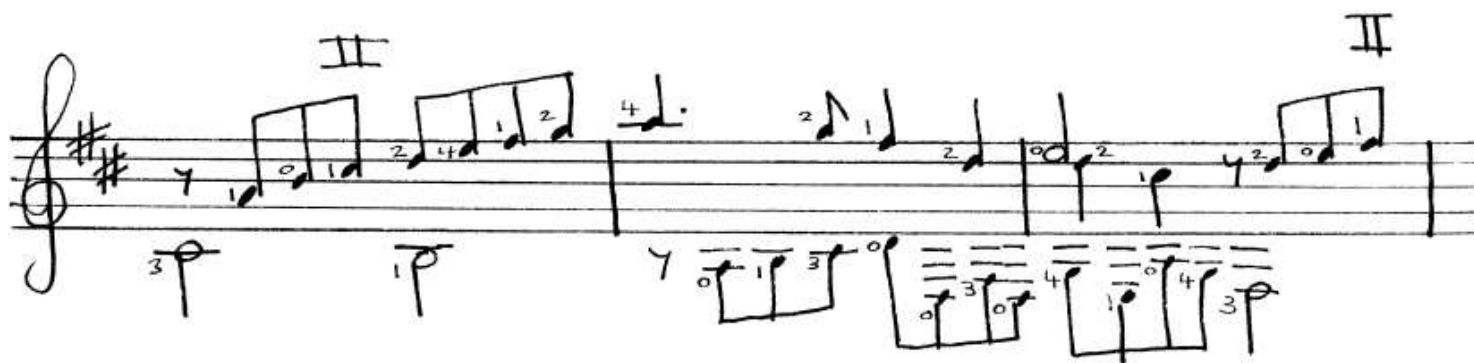
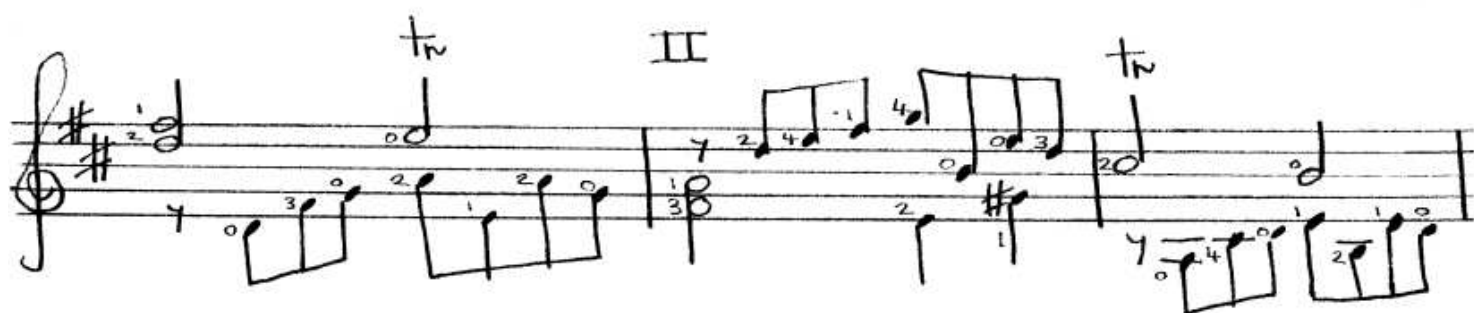
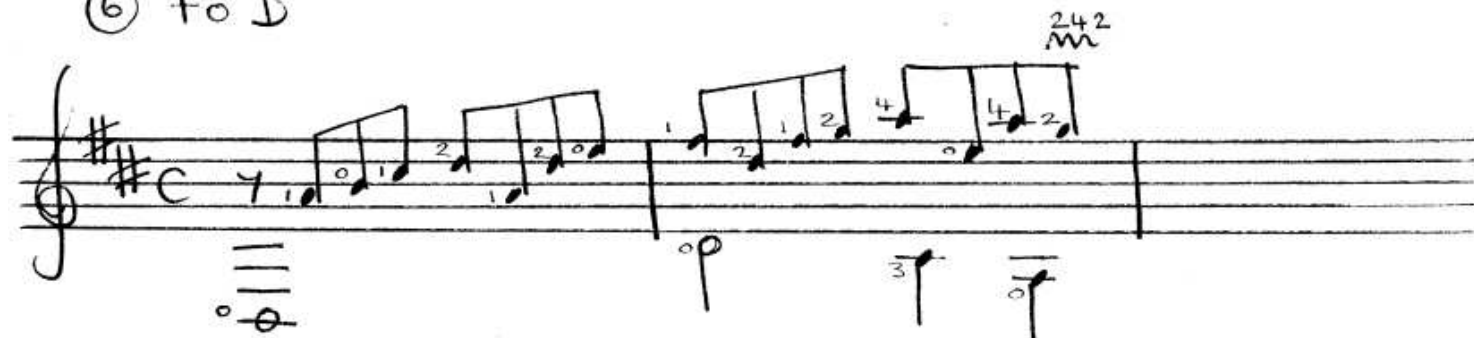


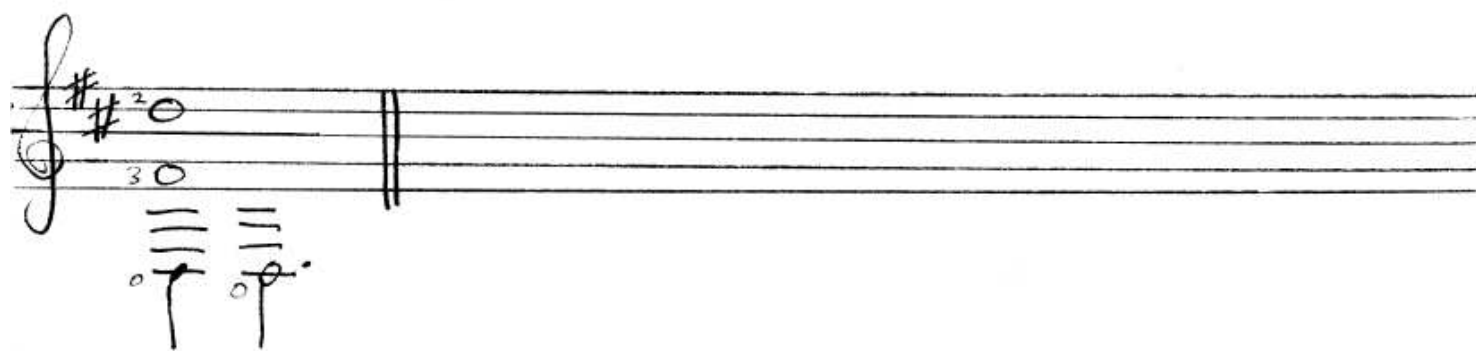
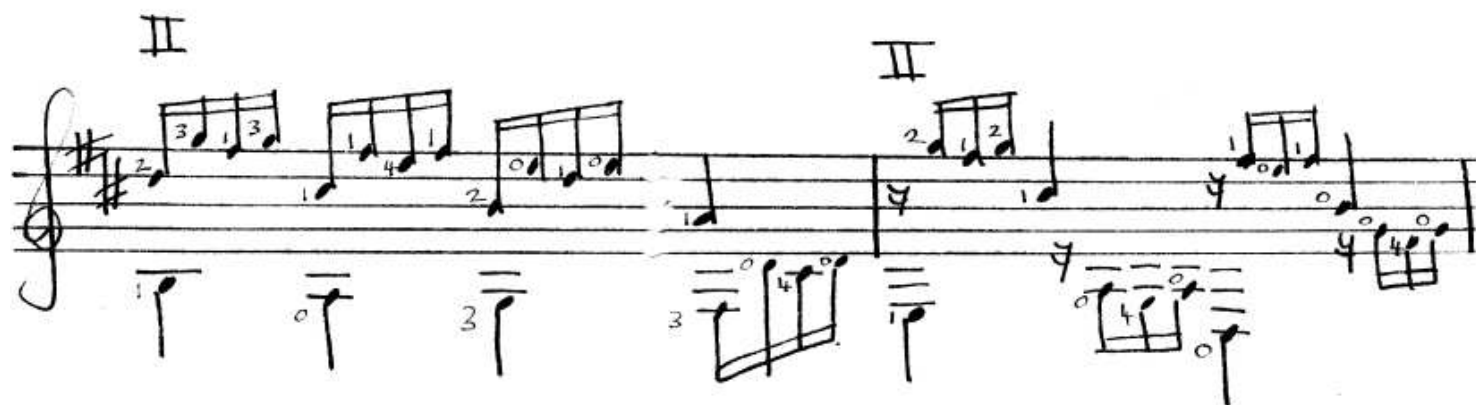
# 1 - Prelude

(Allegretto)

John Blow - trans M. Grayson

⑥ to D



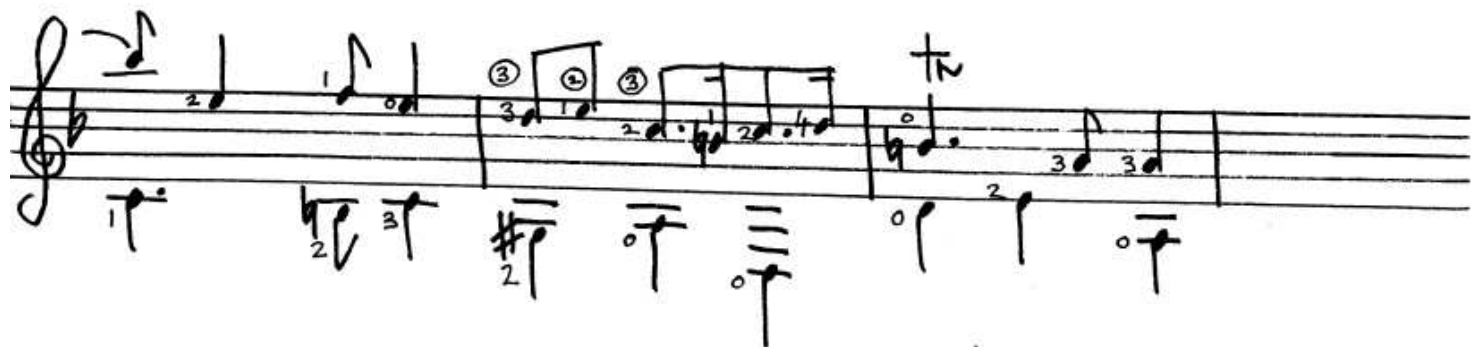
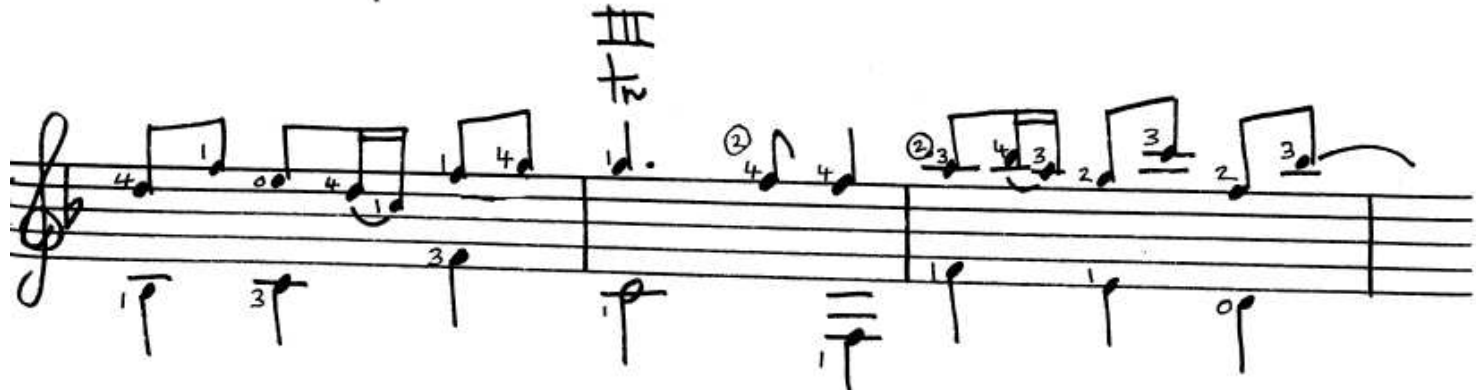
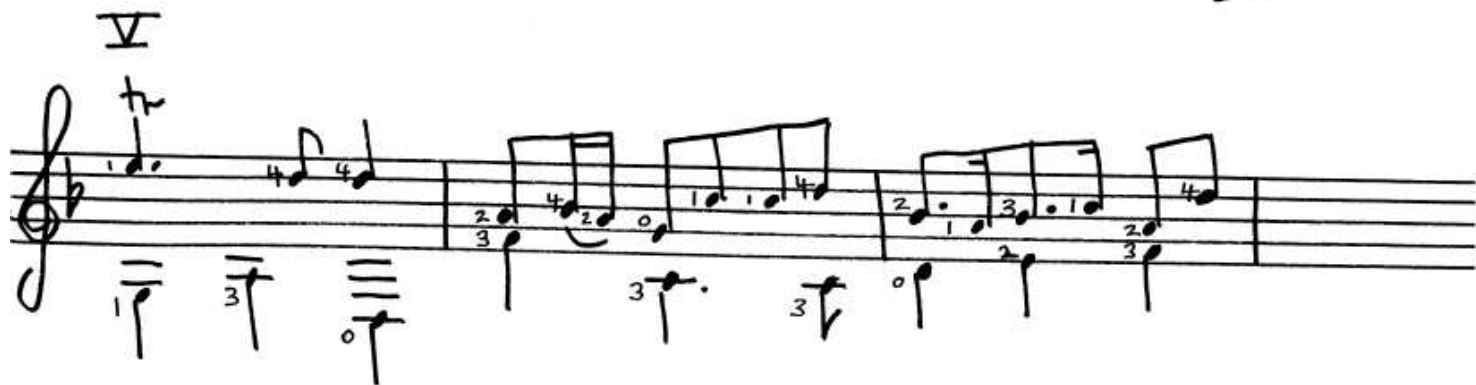
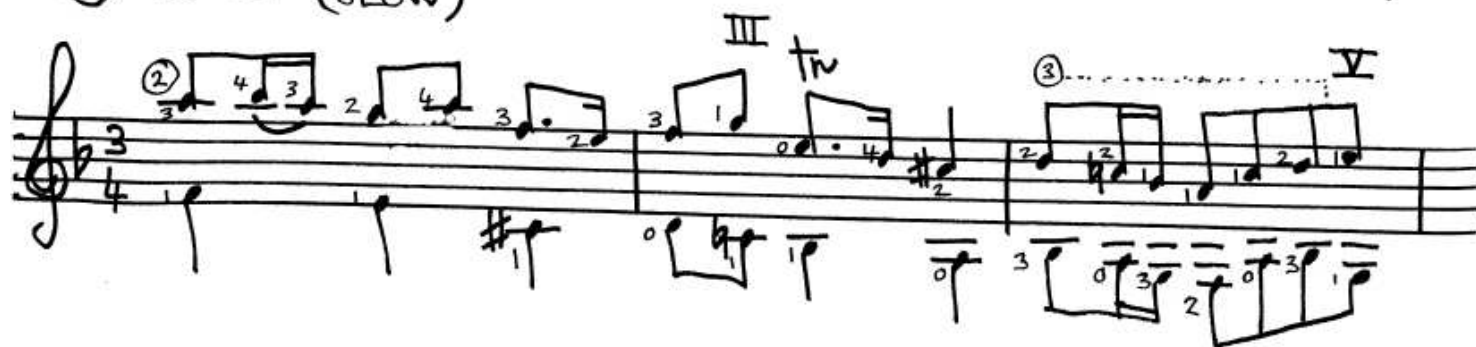


# 2 - SARABANDE

3

⑥ to D. (SLOW)

John Blow - trans Martin Grayson



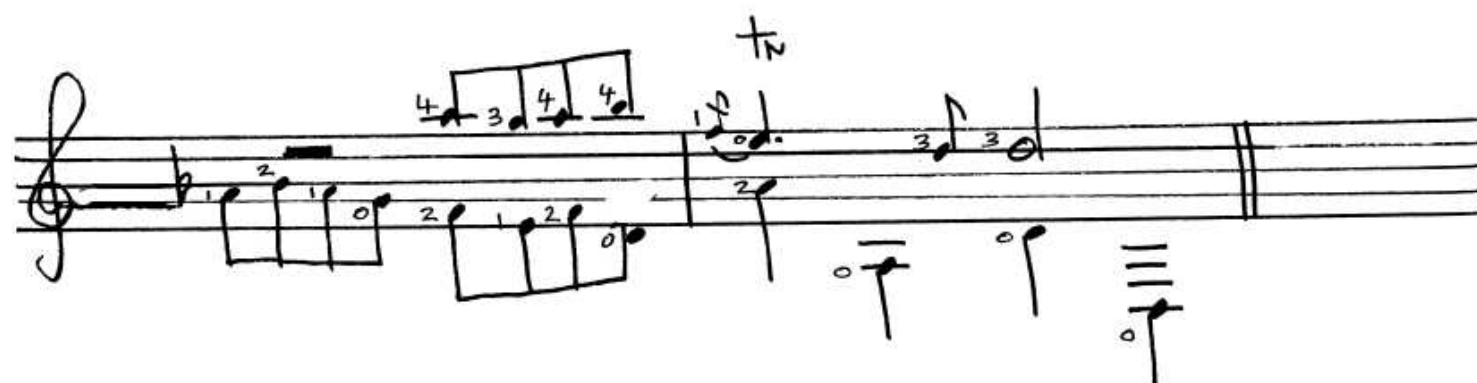
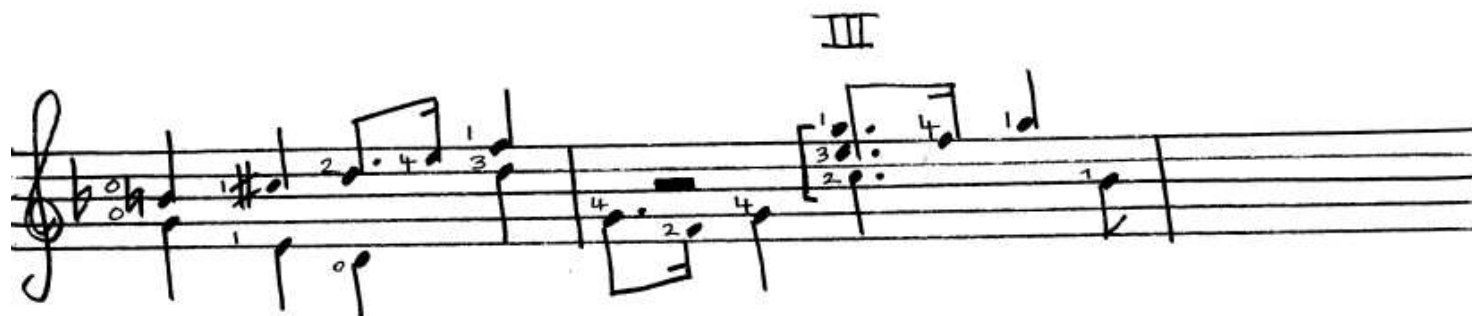
[illegible][illegible]

JOHN BLOW

⑥ to D. (Andante)

A handwritten musical score for guitar on a single staff. The notation includes various notes, rests, and fingerings. Above the staff, there are Roman numerals V, IV, and I. There are also some additional markings like "4 1" and "3". The bottom of the page shows some partial notes from another system.

Handwritten musical score for guitar, featuring a treble clef, a key signature of one sharp (F#), and a 12/8 time signature. The score includes various musical notations such as eighth notes, quarter notes, and rests, with fingerings indicated by numbers 1-4. A double bar line is present, and the piece concludes with a final chord and a double bar line.

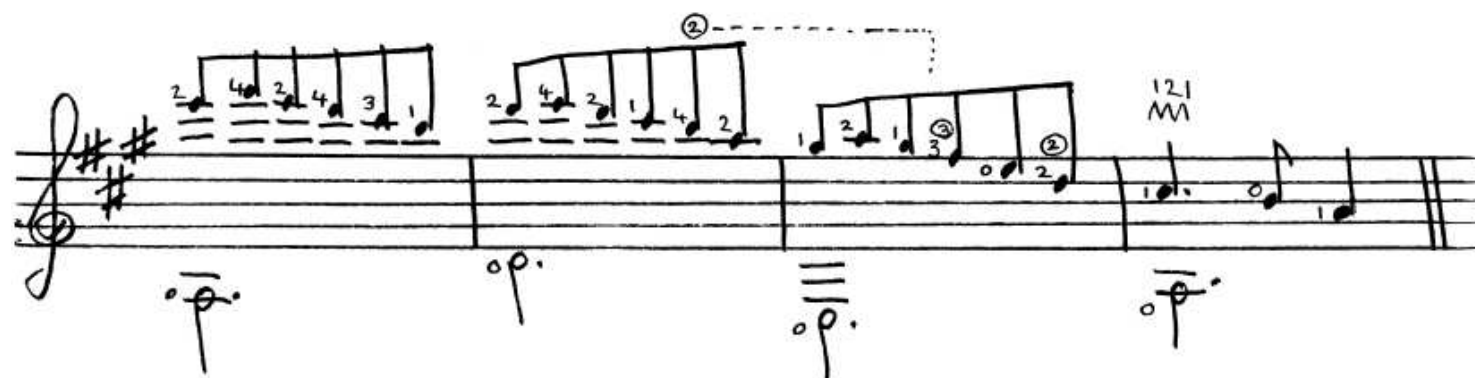
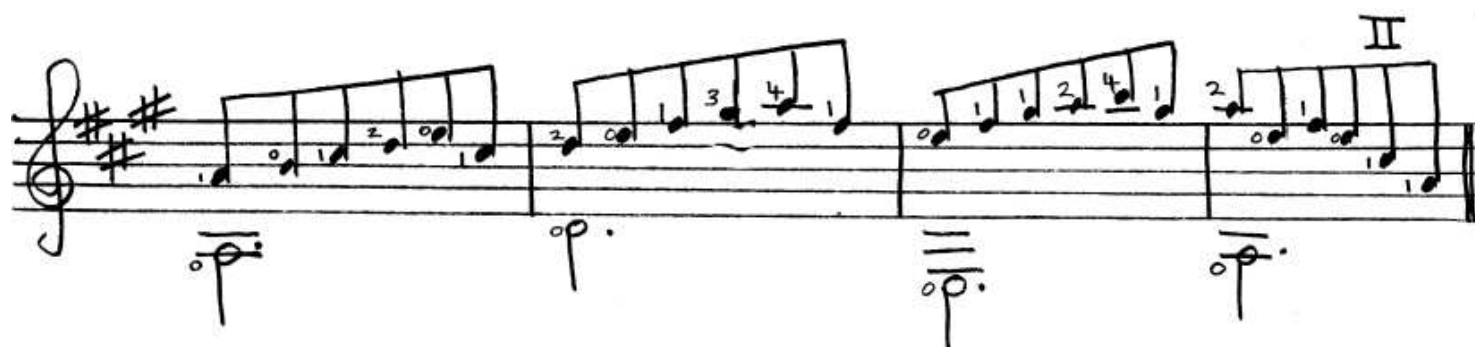


# 4 - THE HAY'S A GROUND

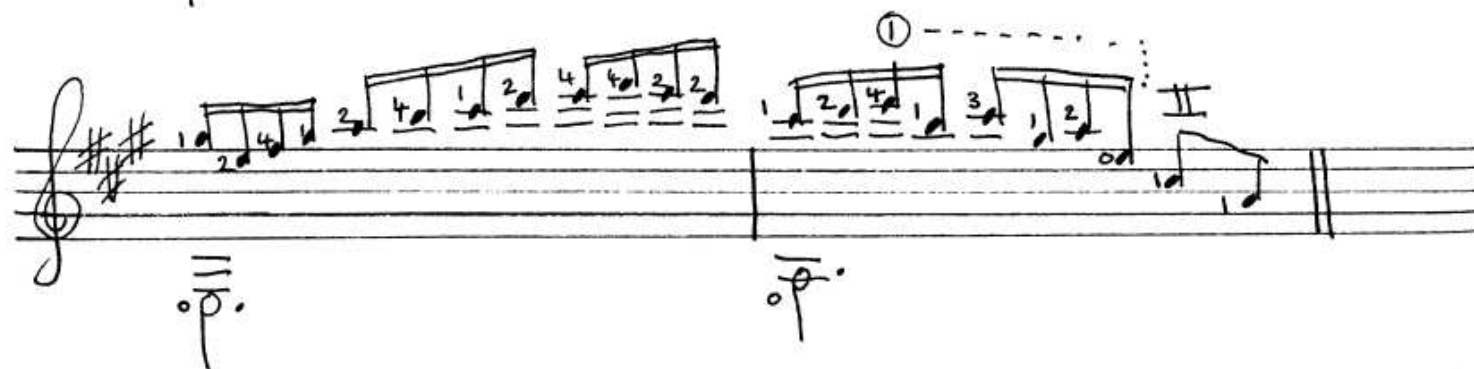
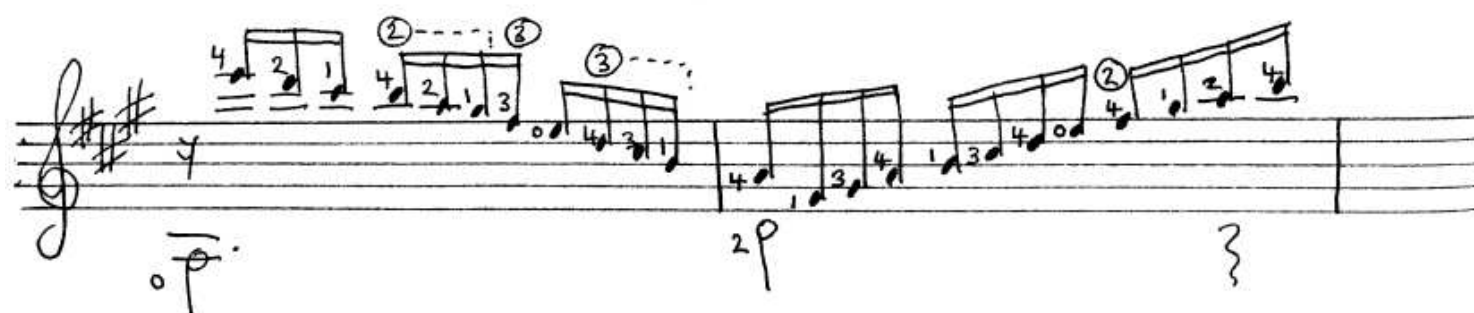
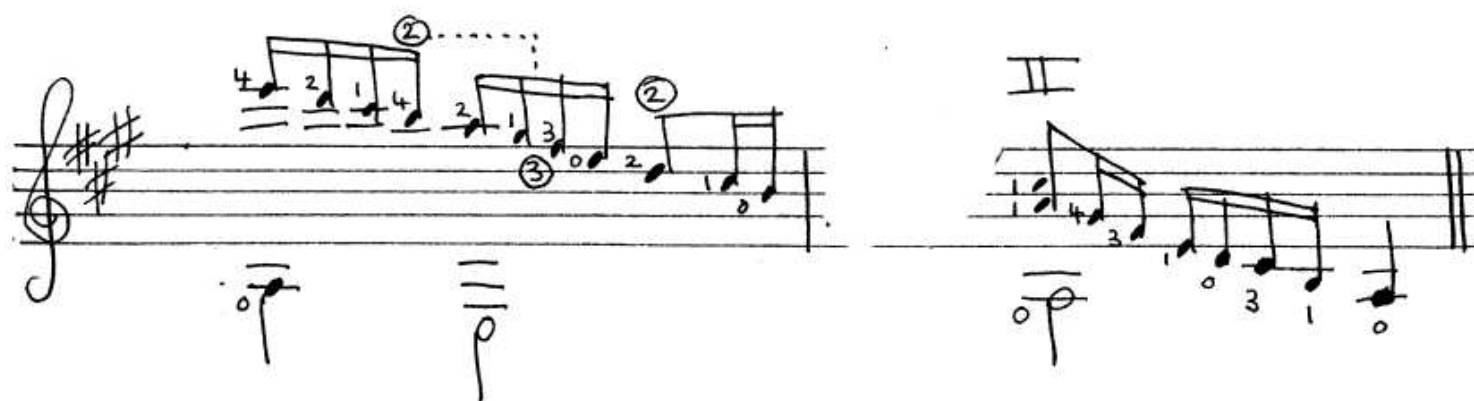
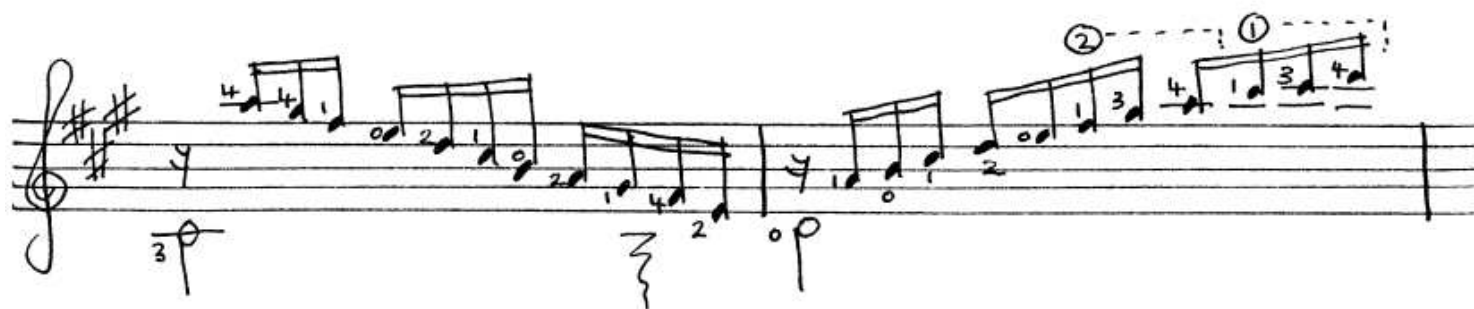
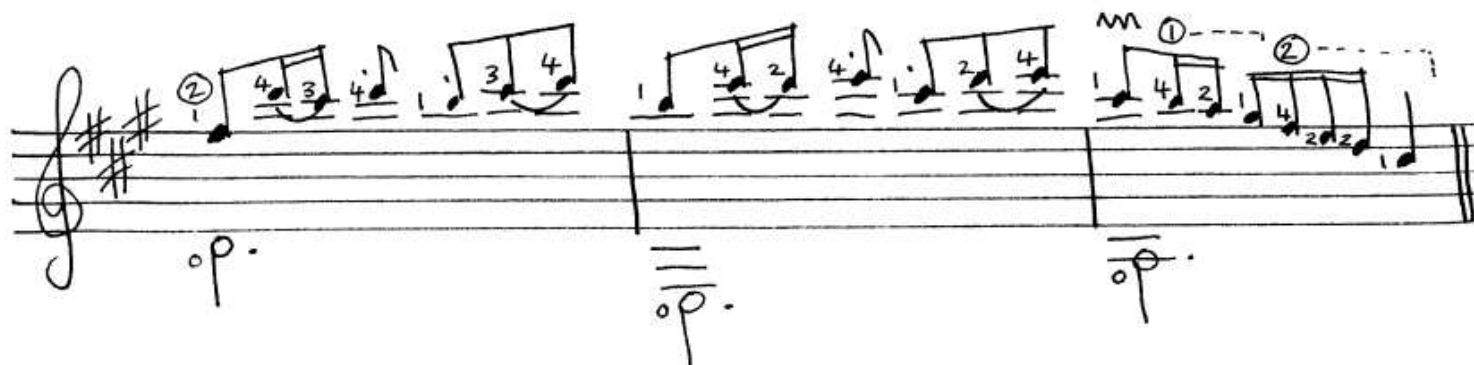
7

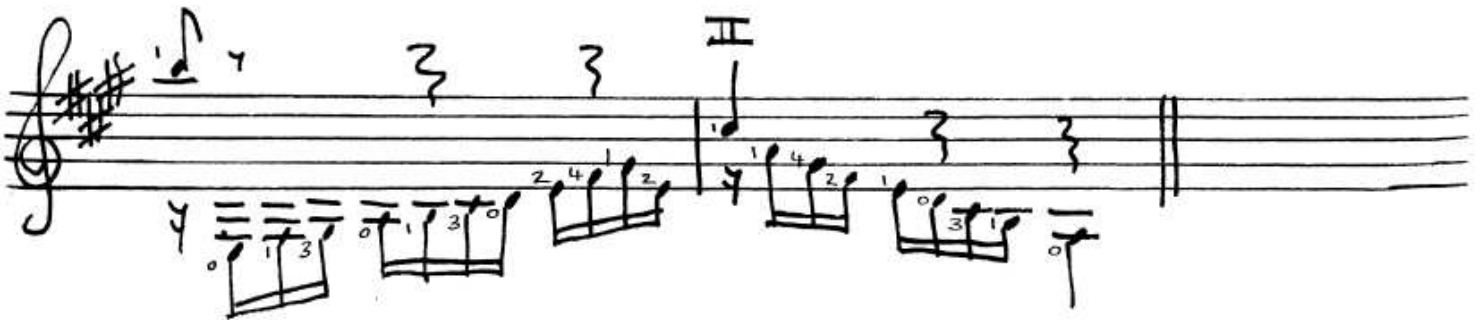
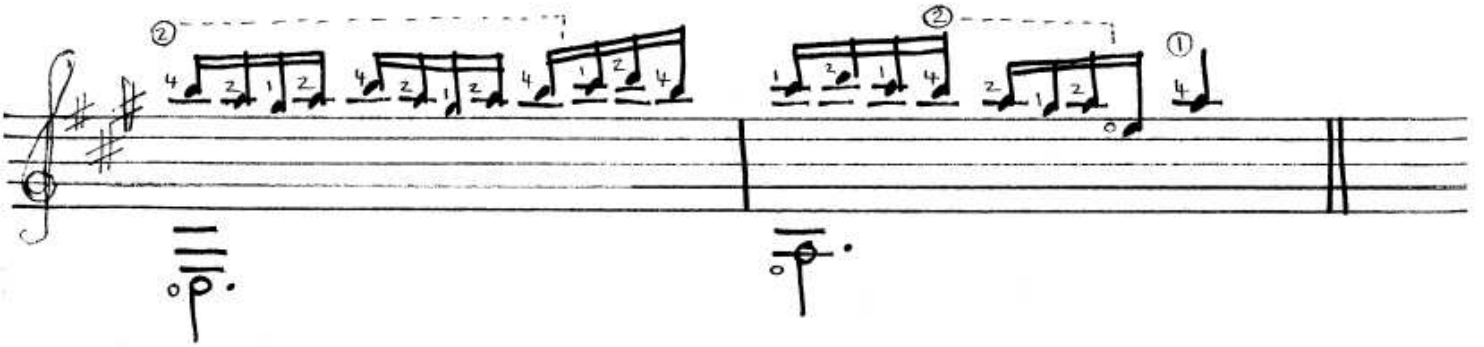
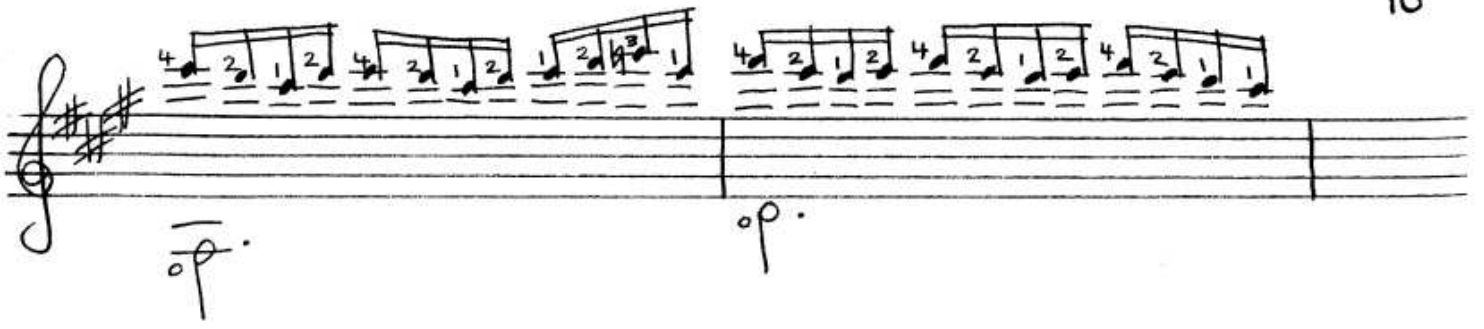
(Moderately Fast)

John Blow



Handwritten musical score for "The Rose Tree" on a grand staff. The treble clef part contains the melody with fingerings (1-4) and slurs. The bass clef part contains a simple accompaniment with a key signature of two sharps (F# and C#). The piece ends with a double bar line and a repeat sign.





The image shows a handwritten musical score for a piece in D major (two sharps). The score is divided into four systems, each with a treble clef and a key signature of two sharps. The notation includes various musical symbols such as notes, rests, and dynamic markings.

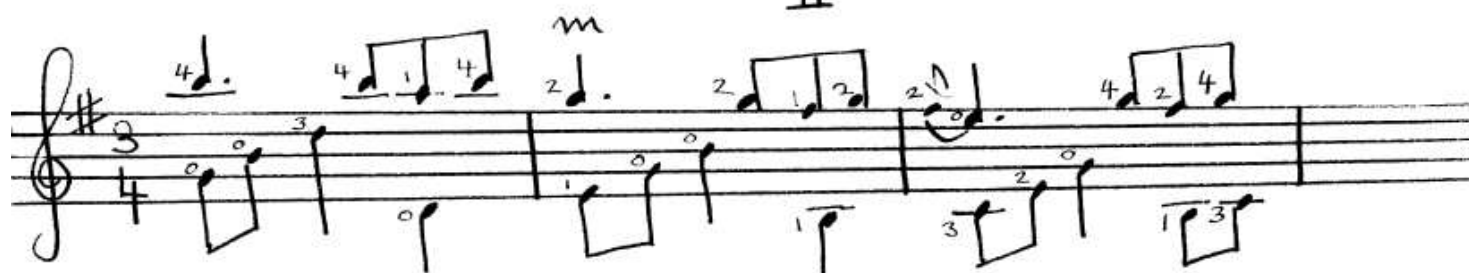
- System 1:** Starts with a treble clef and a key signature of two sharps. It features a series of notes with fingerings (1, 2, 3, 4) and a dynamic marking of  $p$ . Above the staff, there are circled numbers 1, 2, and 3, and a bracketed sequence of notes.
- System 2:** Continues the melodic line with fingerings (2, 4, 2, 1) and a dynamic marking of  $p$ . It includes a series of notes with fingerings (4, 3, 1, 3) and a dynamic marking of  $p$ .
- System 3:** Features a series of notes with fingerings (2, 1, 2, 0, 1) and a dynamic marking of  $p$ . It includes a series of notes with fingerings (2, 0, 1) and a dynamic marking of  $p$ .
- System 4:** Starts with a treble clef and a key signature of two sharps. It features a series of notes with fingerings (2, 2, 2, 2, 2) and a dynamic marking of  $p$ . It includes a series of notes with fingerings (2, 4, 2) and a dynamic marking of  $p$ .

Particularly as this piece has a lack of harmonic interest it is important to make contrasts of dynamics and timbre between the variations. The early variants suggest a  $p/f$  question and answer interpretation. Variants starting at bars 41 and 49 might be played near the bridge and variants at bars 45 and 53 played Dolce.

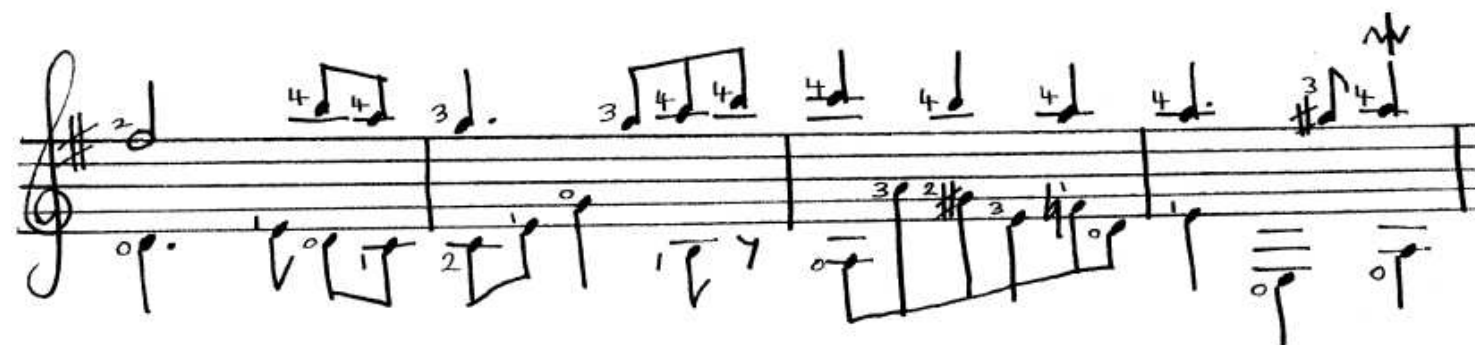
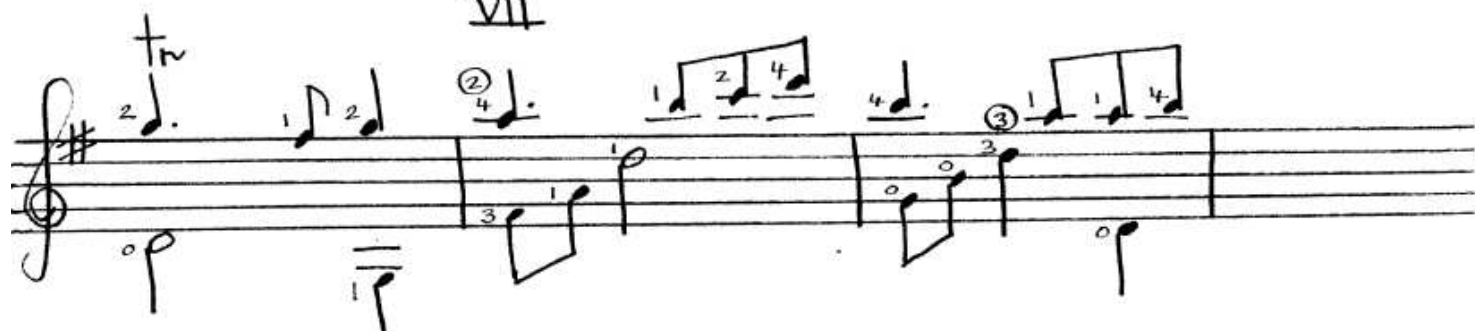
5- SARABAND

John Blow

II



VII



Handwritten musical notation on a five-line staff. The key signature has one sharp (F#). The notation includes various note values (quarter, eighth, sixteenth notes), rests, and fingerings (1, 2, 3, 4). Above the staff, there are Roman numerals **VII** and **II**, and the number **13** in the top right corner. The piece concludes with a double bar line.

Handwritten musical notation on a five-line staff. The key signature has one sharp (F#). The notation includes various note values, rests, and fingerings. Above the staff, there is a Roman numeral **VII**. A dashed line connects the **VII** marking to a measure further right. The piece concludes with a double bar line.

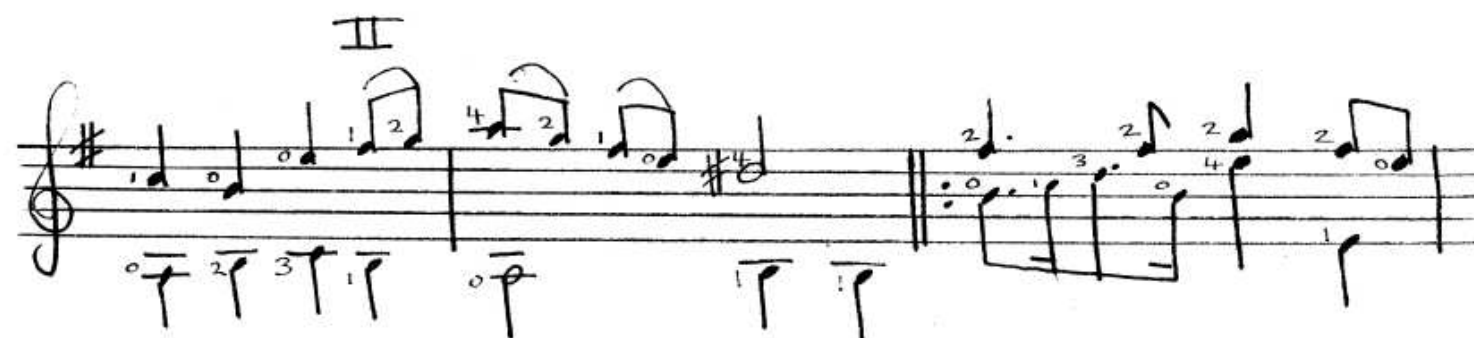
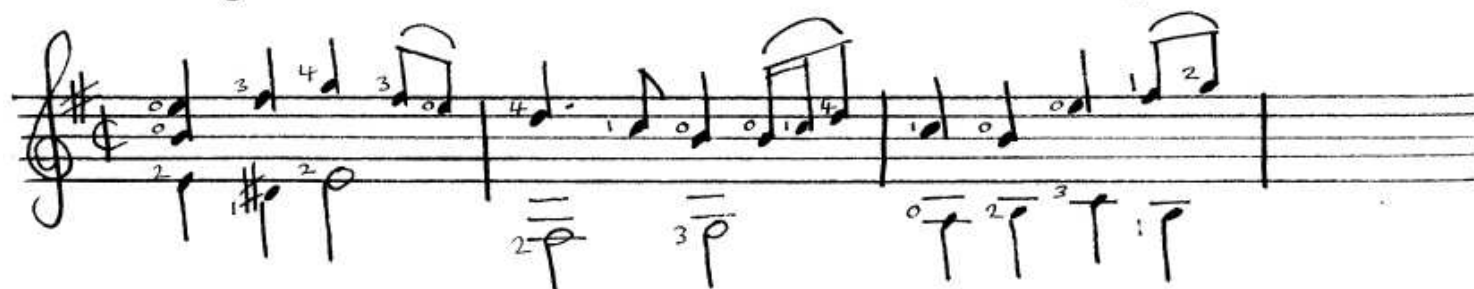
Handwritten musical notation on a five-line staff. The key signature has one sharp (F#). The notation includes various note values, rests, and fingerings. Above the staff, there are Roman numerals **VII** and **VII**, and a trill symbol (**tr**) above a measure. The piece concludes with a double bar line.

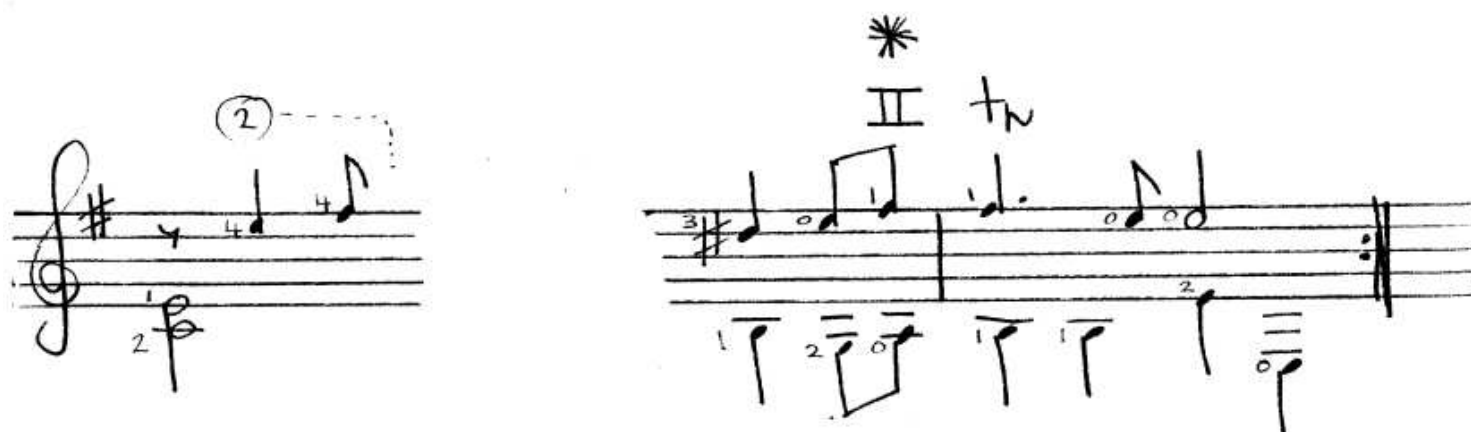
Handwritten musical notation on a five-line staff. The key signature has one sharp (F#). The notation includes various note values, rests, and fingerings. Above the staff, there is a Roman numeral **VII**. The piece concludes with a double bar line.

Handwritten musical notation on a five-line staff. The key signature has one sharp (F#). The notation includes various note values, rests, and fingerings. Above the staff, there is a trill symbol (**tr**) above a measure. The piece concludes with a double bar line.

6 - AYRE  
(Allegretto)

John Blow



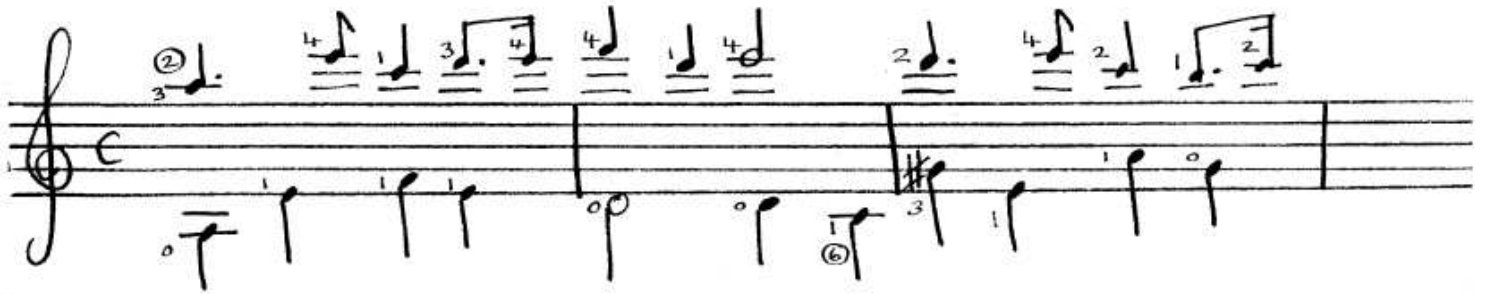


\* Prepare the barré by playing the F# on the 3rd joint of the finger leaving the A to sound beneath it.

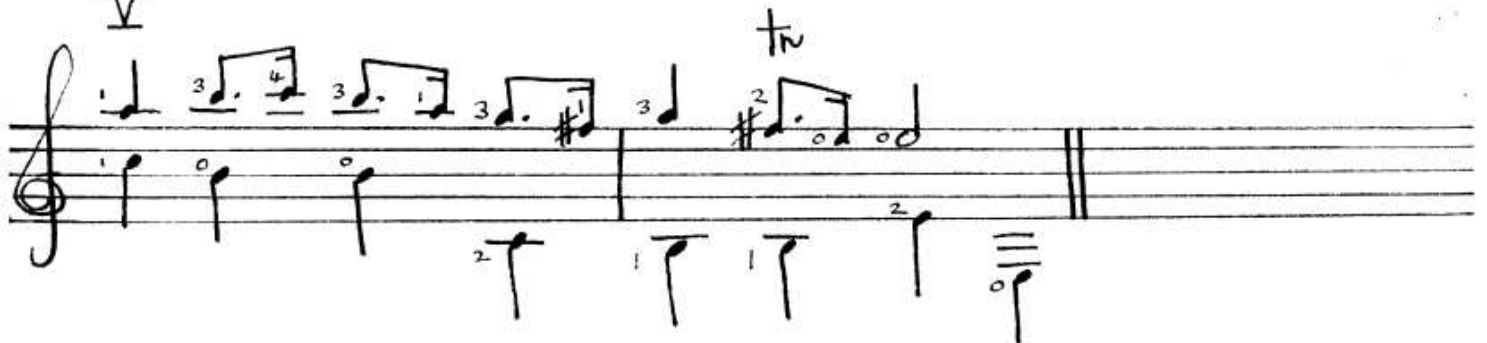
7 - AYRE  
(Slow)

John Blow 16

VIII



V



Handwritten musical notation on a five-line staff, divided into two systems by a double bar line. The notation includes fingerings (1-5) and articulation marks.

**System VII:** The first system is labeled with the Roman numeral **VII** above the staff. It contains a sequence of notes with fingerings: 1, 2, 4, 4, 3, 1, 4, 1, 4, 4, 4, 4, 1, 1. The notes are connected by slurs and have various articulation marks.

**System VIII:** The second system is labeled with the Roman numeral **VIII** above the staff. It contains a sequence of notes with fingerings: 3, 2, 3. The notes are connected by slurs and have various articulation marks.

The notation is written in a style typical of early 20th-century musical manuscripts, with a focus on fingerings and articulation.